

RAS - Mustang Beach

27.8118333, -97.08875

⚠ This is a snapshot of RAS as of **2025-10-01**. The information here may be outdated.

[View live page](#)

[Update content pack](#)

✈ Airport Statistics

📍 Location: Port Aransas, TX

📏 Elevation: 5ft

📖 Sectional: Brownsville

🎂 Activation date: Dec 1965

🛢 Fuel: 100LL ([prices](#))

🛬 Runway 12/30: 3,482ft

🔓 Access: Open to the public



🏷 Tags

🔓
Public

☀
METAR /
TAF

☂
Swimming

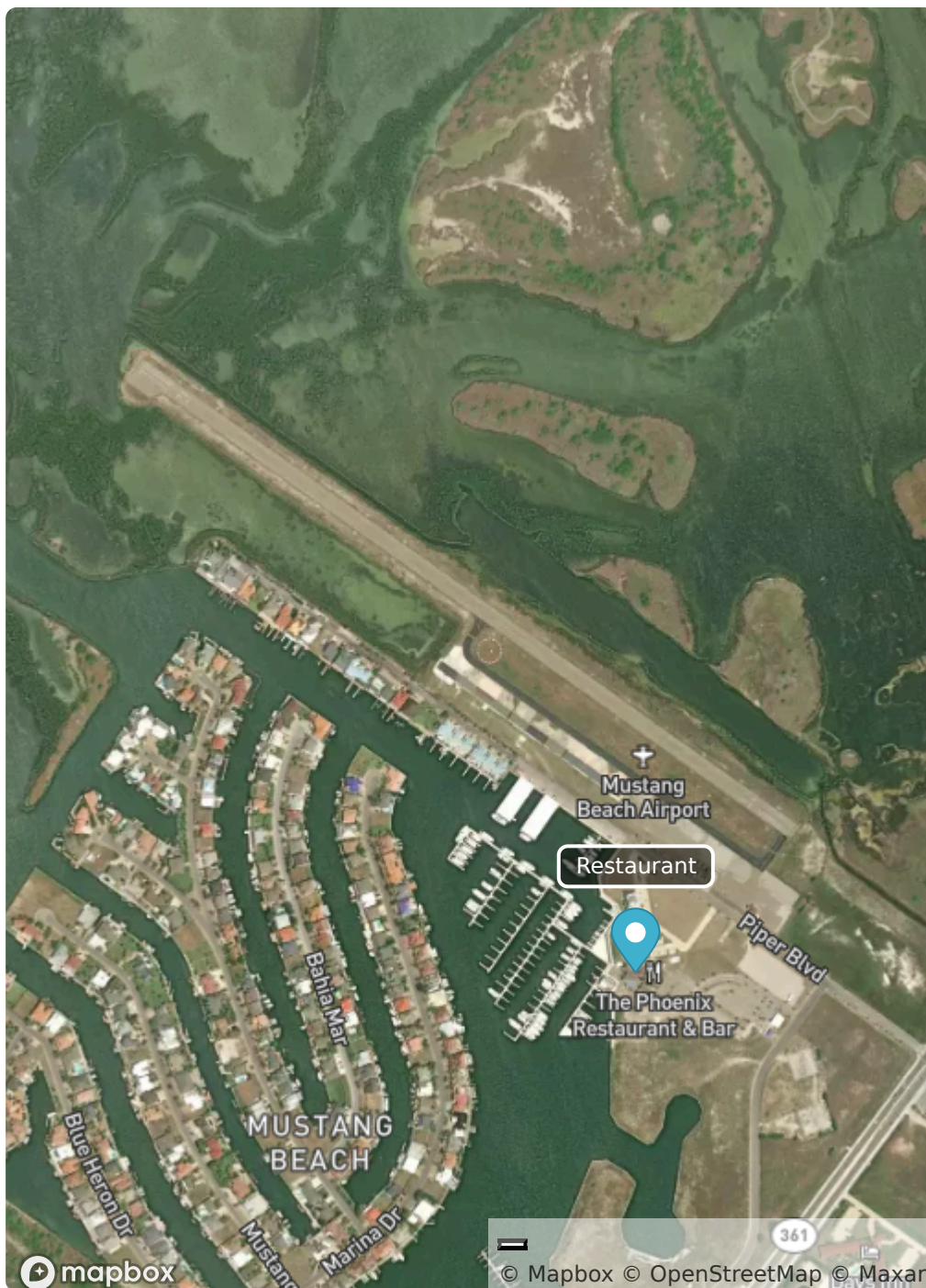
🍔
Food

Description

RAS has a fun approach over the bay. There is a gas station market 1/4mi from the runway. Another 1/4mi past the gas station is the beach. It's possible with coordination to arrange for a golf cart rental / delivery to the airport upon arrival.

The Phoenix Restaurant & Bar is located across the road from the airport.

Last updated: 2025-09-12 01:56:19 CDT



mapbox

© Mapbox © OpenStreetMap © Maxar